



Adam Cusack | Amber-Rose Hulme | Liron Gilmore | Matt Coyle | Laura Ellenberger



CONTEMPORARY

 mcontemporaryindustry  mcontemporary  MContemporary  mcontemp.com

02 9328 0922 | 37 Ocean Street, Woollahra, Sydney, Australia, 2025

BIO | Adam Cusack

Adam Cusack is an artist whose practice explores ideas of authenticity and identity in popular culture.

Using a process of conceptual development, photography then drawing or painting to realize the artwork, Adam is interested in showing real things in provocative ways; assembling unrelated objects together to bring about relationships that challenge the perception of the original items.

His creative approach honours the traditional picture plane utilising simple methods, applying charcoal or pigment on the prepared surface.

.M

CONTEMPORARY



Adam Cusack
Inception, 2017
Charcoal on paper
75 x 57 cm

.M

CONTEMPORARY



Adam Cusack
Intruder Interrupted, 2017
Charcoal on paper
75 x 57 cm

.M

CONTEMPORARY



Adam Cusack
That's No Way To Leave, 2017
Charcoal on paper
75 x 57 cm

BIO | Amber-Rose Hulme

Suddenly bathed in silence, these walls, now devoid of their intended purpose, take on a new identity, giving voice to the expressions of others as a blank canvas.

In these works Amber-Rose uses graffiti as a symbol for the unsolicited labeling of others, scrawled across every surface. These buildings or structures stand resolutely steadfast, a parallel of ourselves standing still amongst the commotion. The words, both negative and positive, have the power to shape or alter the perception of the wearer. The intended meaning of these words, however, may be quickly lost or altered by the addition of many voices layered over each other. This temporal quality akin to that of the spoken word moves at a much slower pace, as if we can see the conversation played out in slow motion.

Amber-Rose explores how we are shaped by our individual experiences and how we find who we are through the noise, the collective anthology, or interweaving of many voices, only finding tranquility once we've learnt to accept ourselves and our words completely.

Professional highlights include finalist selection in 2016 for the Rick Amor Drawing Prize, Stanthorpe Art Prize and Corangamarah Art Prize. In 2015 she was selected as a finalist in the Hutchins Drawing Prize, Sunshine Coast Art prize, Corangamarah Art Prize and received a highly commended in the Muswellbrook Art Prize. In 2014 she was accepted into her first major art prize as a finalist in the Paul Guest Drawing Prize.



CONTEMPORARY



Amber-Rose Hulme
Endurance, 2016
Pastel on paper
122 x 84 cm



CONTEMPORARY



Amber-Rose Hulme
Hush, 2017
Pastel on paper
74 x 122 cm



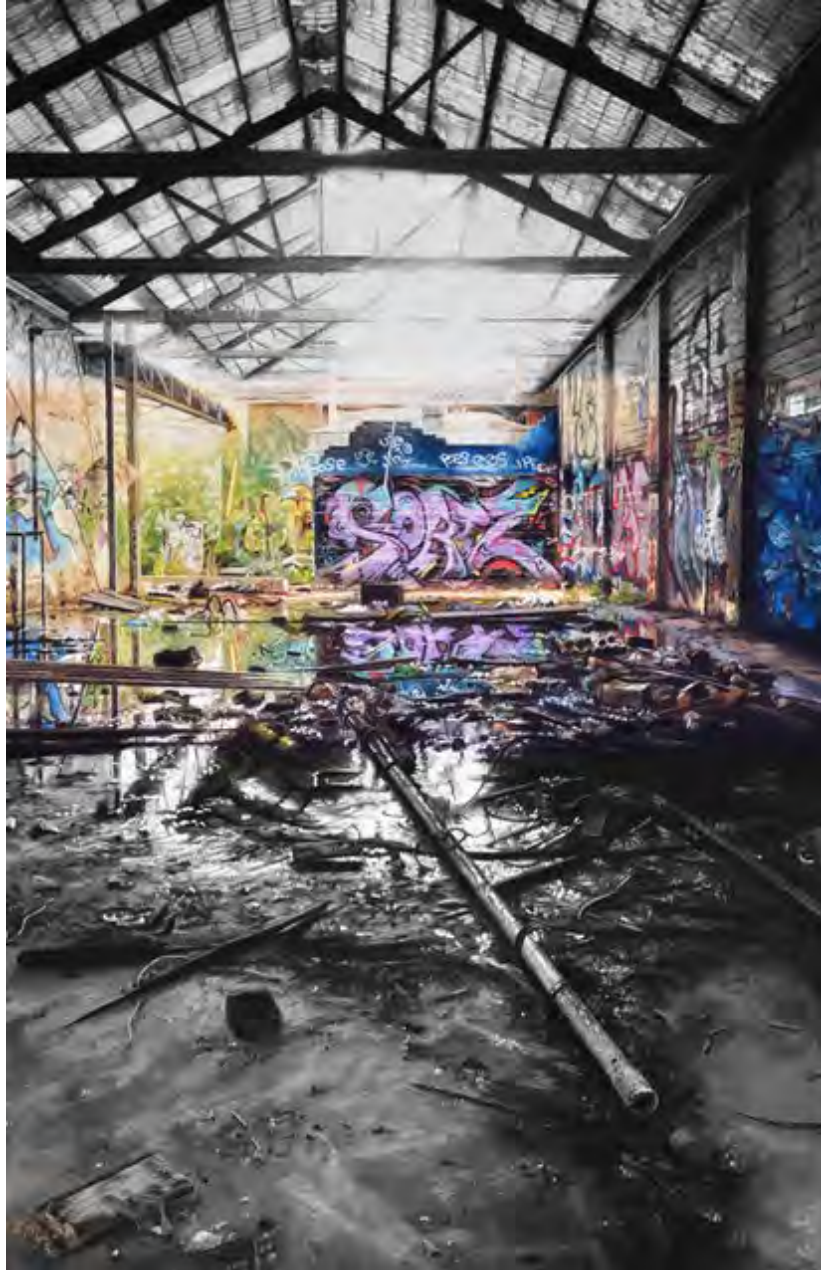
CONTEMPORARY



Amber-Rose Hulme
Just My Words, 2014
Pastel on paper
122 x 84 cm



CONTEMPORARY



Amber-Rose Hulme
Silent Echo, 2017
Pastel on paper
122 x 84 cm



CONTEMPORARY



Amber-Rose Hulme
Silent, 2017
Pastel on paper
50 x 50 cm

BIO | Liron Gilmore

Liron Gilmore's work explores themes of survival, resilience and the possibility for transformation through experimentations with sculpture, video and installation. The ebb and flow of Nature is also a recurring metaphor within her work.

Like a shamanic arrangement of branches wrapped in thread and yarn, her sculptures are inspired by the bold markings displayed on the wings of insects where eyespots beguile, patterns disrupt and colours dazzle. She likens the gathering of fallen branches to an archaeological dig where a commonplace branch becomes a relic, the map of a life lived to be commemorated and embalmed. The process of wrapping lies somewhere between ritual and meditation as each thread moves with her breath.

Fascinated by an insect's ability to conceal itself from predators, her work embodies characteristics of mimicry and camouflage. At a distance the yarn gives the illusion of paint and branches resemble sinewy bones or insect-like appendages. A trick of the eye invites the viewer to take a closer look - perhaps for the first time at a tree branch causing a subtle shift in perception as the individual threads are revealed.



CONTEMPORARY



Liron Gilmore
Sema, 2016
Silk thread and found branches
100 x 100 cm



CONTEMPORARY



Liron Gilmore
Delphi, 2017
Silk thread and found branches
70 x 70 cm



CONTEMPORARY



Liron Gilmore
Heliconious, 2017
(detail)
Silk thread and found branches
30 x 40 cm



CONTEMPORARY



Liron Gilmore
Brightness Hidden, 2017
Silk thread and found branches
56 x 31 cm

BIO | Matt Coyle

Matt Coyle was born in 1971 and grew up in Canberra, Australia. After a short stint at art school in Sydney, Coyle turned his attention to drawing and has mostly been working within the medium ever since.

Coyle exhibits regularly in Melbourne, Hobart and Sydney and has appeared in group shows internationally including The Hong Kong Art Fair, Art Athena and the Korean International Art Fair (KIAF). He has worked in the collections of the NGV and the Gallery of Modern Art / Queensland Art Gallery and has been commissioned to create drawings for Art and Australia magazine.

Coyle has two published graphic novels: *Worry Doll* (2016, Dover Publications, US) and *Registry of Death* (1996, Kitchen Sink Press, USA).

He lives and works in Hobart, Tasmania.



CONTEMPORARY



Matt Coyle
Get a Wriggle On, 2015
Felt tip pen, coloured pencil on paper
53 x 64 cm

.M

CONTEMPORARY



Matt Coyle
Pot Cat, 2015
Felt tip pen, coloured pencil, gouache on paper
71 x 52 cm

.M

CONTEMPORARY



Matt Coyle
To the Death (1), 2014
Felt tip pen, coloured pencil on paper
42 x 60 cm

.M

CONTEMPORARY



Matt Coyle
To the Death (2), 2014
Felt tip pen, coloured pencil on paper
42 x 60 cm

BIO

Laura Ellenberger (b.1963) is a visual artist practising in Sydney and London, where she has a studio.

She is interested in interior space and memory and evokes this through the use of layering and surface in contemporary drawing. Her latest body of work is photographic and she uses alternative/historic printing methods combined with the technology of our time, often disrupting the surface by fragmenting the image. Her work is imbued (often invisibly) with reference to art history and her experiences of three global cultures acknowledge time and place.



CONTEMPORARY



Laura Ellenberger
Landscape IV, 2017
Archival silver fibre photographic print
24h x 30.40w cm
Edition 1/10
(unframed)



CONTEMPORARY



Laura Ellenberger
Landscape III, 2017
Archival silver fibre photographic print
24h x 30.40w cm
Edition 1/10
(unframed)



CONTEMPORARY



Laura Ellenberger
Landscape II, 2017
Archival silver fibre photographic print
24h x 30.40w cm
Edition 1/10
(unframed)



CONTEMPORARY



Laura Ellenberger
Landscape I, 2017
Archival silver fibre photographic print
24h x 30.40w cm
Edition 1/10
(unframed)