



At The End Of The World
Kirrily Humphries



CONTEMPORARY

[@mcontemporaryindustry](#) [@mcontemporary](#) [f MContemporary](#) [mcontemp.com](#)

02 9328 0922 | 37 Ocean Street, Woollahra, Sydney, Australia, 2025

KIRRILY HUMPHRIES | BIO

Kirrily becomes quietly absorbed in the solitary exploration of architectural space. In her isolation she feels a heightened sense of physical presence, an amplified sensory awareness. The excited terror of exploring a space forbidden or unknown intensifies this experience, presenting a realm for fantasy, anticipation and unfolding narrative.

Based on her expeditions within contemporary ruins, she paints moments of sublime revelation, found in their distinct phenomenological and psychological experience. In these desolate interiors she confronts her anxieties, her fears of destruction, and the transience and brevity of human legacy.



CONTEMPORARY



Kirrily Humphries
GNH Interior XII, 2017
Oil on arches huile
35.50h x 28w cm

.M

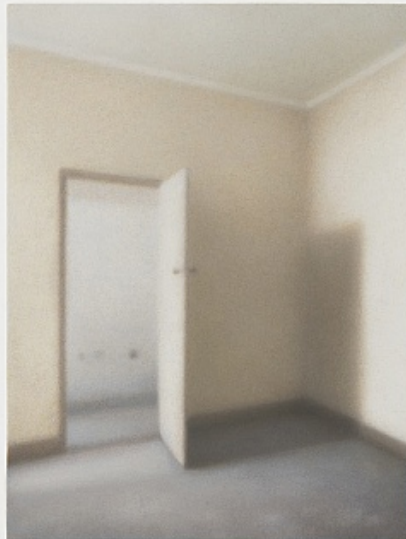
CONTEMPORARY



Kirrily Humphries
GNH Interior XVII, 2017
Oil on arches huile
45.50h x 35.50w cm

.M

CONTEMPORARY



Kirrily Humphries
GNH Interior XVIII, 2018
Oil on arches huile
30.50h x 22.80w cm

.M

CONTEMPORARY



Kirrily Humphries
GNH Interior XIX, 2018
Oil on arches huile
35.50h x 28w cm

.M

CONTEMPORARY



Kirrily Humphries
GNH Interior XX, 2018
Oil on arches huile
40.80h x 30.50w cm