



Hannah Toohey – *Metastasis*

August 5th – August 20th, 2017

OPENING

Tuesday, 8 August 2017 | 6 – 8pm

The exhibition *Metastasis* is an exploration of the artist's anxiety in relation to social ecology, urban sprawl and the environment. Through a series of installations and sculptures, Toohey draws direct comparison between the human pattern of malignant urbanism, mass consumption and depletion of natural resources back to the spread of a disease. Each piece, through their laborious and repetitive construction, mimics the social phenomenon of mass production, depletion and sprawl.

Toohey seeks to blur the distinctions between art and science, borrowing from the aesthetic of the biological and the bacterial to create a macabre flora and fauna. The man-made quality and incorporation of artificial and natural materials allude to organic forms from which they borrow, but exemplify the collision of the synthetic and organic. *Metastasis* is emblematic of humankind's beautiful destructiveness, simultaneously seductive and grotesque.

ABOUT HANNAH TOOHEY

Hannah Toohey is a Sydney based object and installation artist who was awarded First Class Honours in a Bachelor degree in Fine Arts at the National Art School in 2014, and at present is completing a residence at Parramatta Artists Studios.

Her practice is contingent on repetitive process, where she applies conventions of printmaking in a non-traditional manner and experiments with various mediums to explore the idea of "print" and multiple in sculptural form.

CONTACT

Louise Rush, Director
P: +61 (2) 9328 0922
louise@mcontemp.com

ABOUT .M CONTEMPORARY

.M Contemporary is a gallery space that aims to create a cross-cultural conversation through exhibiting and supporting emerging and established artists from around the world. Since opening in Sydney in 2013, we have aimed to foster a strong appreciation for a new generation of Australian artists and to expose them to a wide audience of both novice and established collectors.

.M Contemporary has a strong focus on supporting these artists' ongoing presence through regular exhibitions and participation in international and local art fairs. We see ourselves as progressive, diverse and all-encompassing, a place where artists are nurtured and supported while being exposed to a far-reaching yet astute audience.

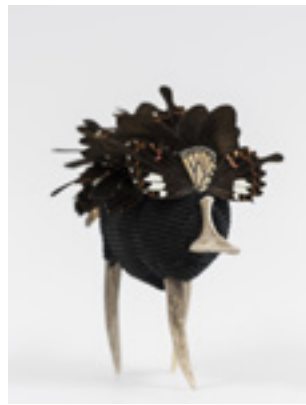
HANNAH TOOHEY – METASTASIS | AUGUST 5TH – AUGUST 20TH, 2017
For hi-res press images, please email Louise Rush at: louise@mcontemp.com



Archaea No.01, 2017



Archaea No.02, 2017



Archaea No.03, 2017



Archaea No.04, 2017



Archaea No.05, 2017



Archaea No.06, 2017



Archaea No.07, 2017



Archaea No.08, 2017



Archaea No.09, 2017



Progeny, 2017